

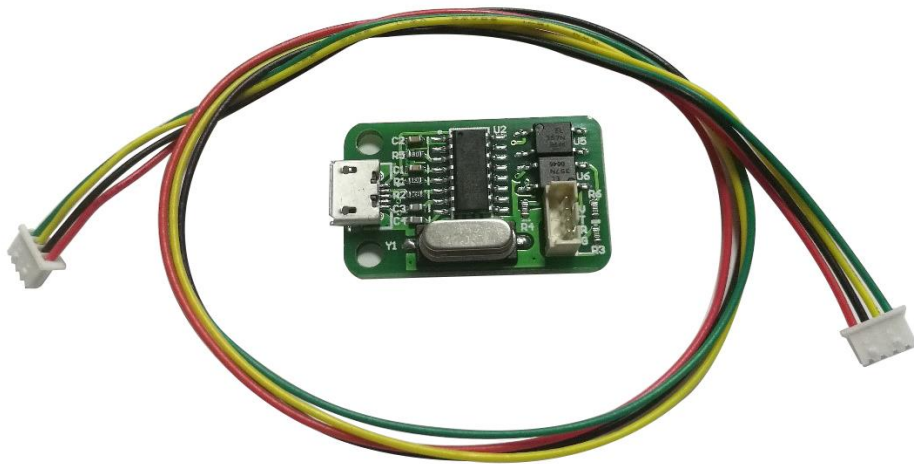
# OPERATING MANUAL

## DPS8005 Digital Power Supply Upper Computer

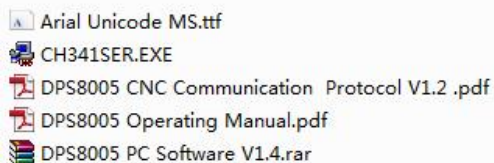
(For Win7 SP1 and above)

### 1 Communication Board Connection

#### 1.1 Wire Communication Board Connection



Open data package, double click CH341SER.EXE and install drive program of communication board.



After installation, please use the attach cable to connect digital power supply with communication board, and use USB cable to connect Micro USB port with PC.

#### **Digital power supply communication data setting:**

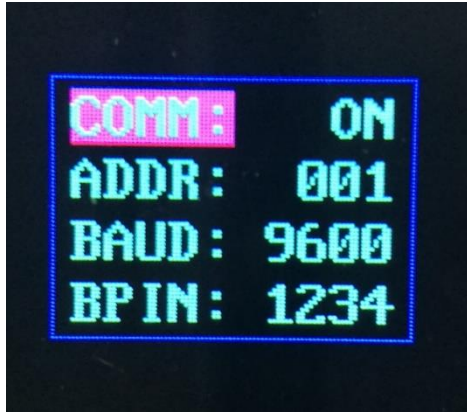
Keep pressing ↑ button to power on, then enter into data setting interface. Press ↑ or ↓ to choose data, then press knob to adjust the value. After adjustment, press twice shortly SET key to exist data setting, and those data are stored automatically.

**COMM:** Communication stitch setting, ON represents opening communication, OFF represents closing communication.

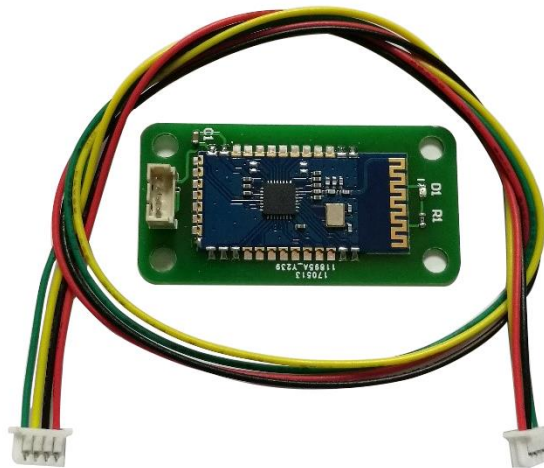
**ADDR:** Digital power supply address code, range 001-255.

**BAUD:** Communication baud rate, 2400,4800,9600,19200 adjusting.

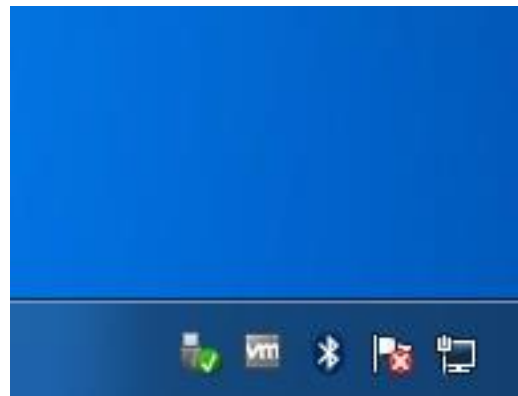
**BPIN:** Bluetooth PIN Code Pairing, 0000-9999, useless for wire communication.



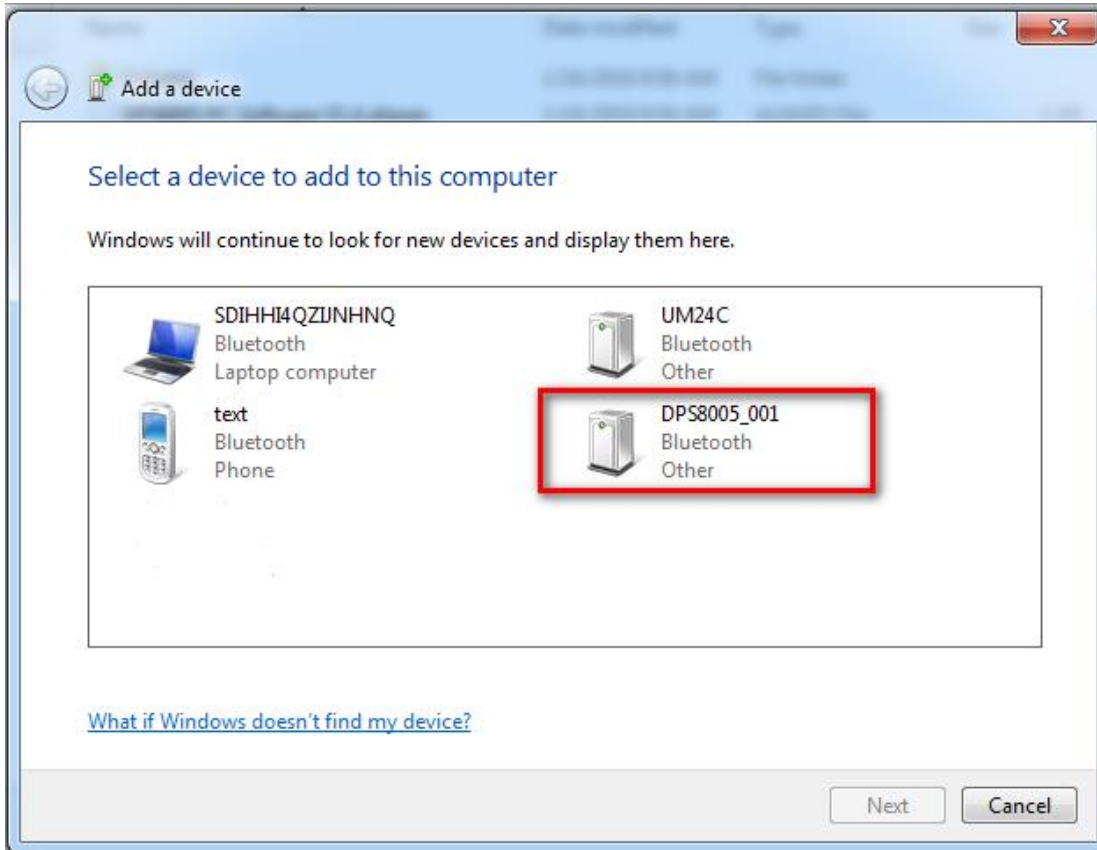
## 1.2 Bluetooth communication board



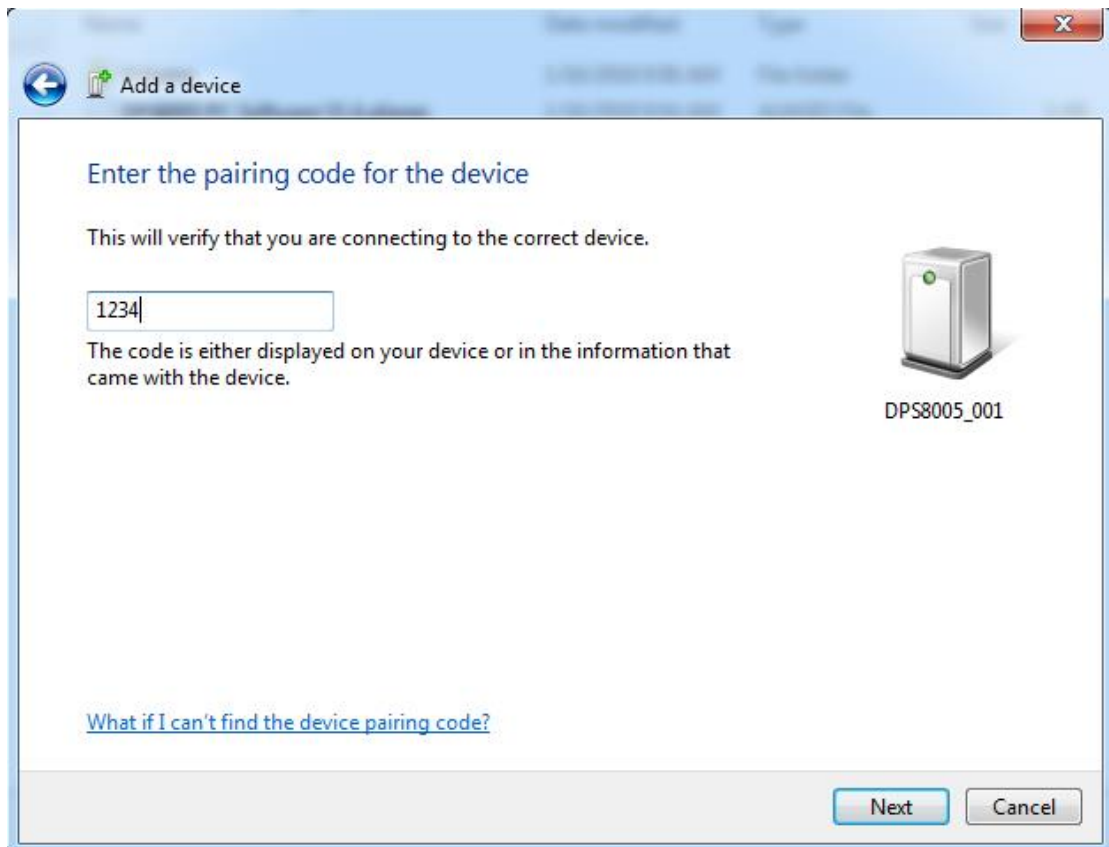
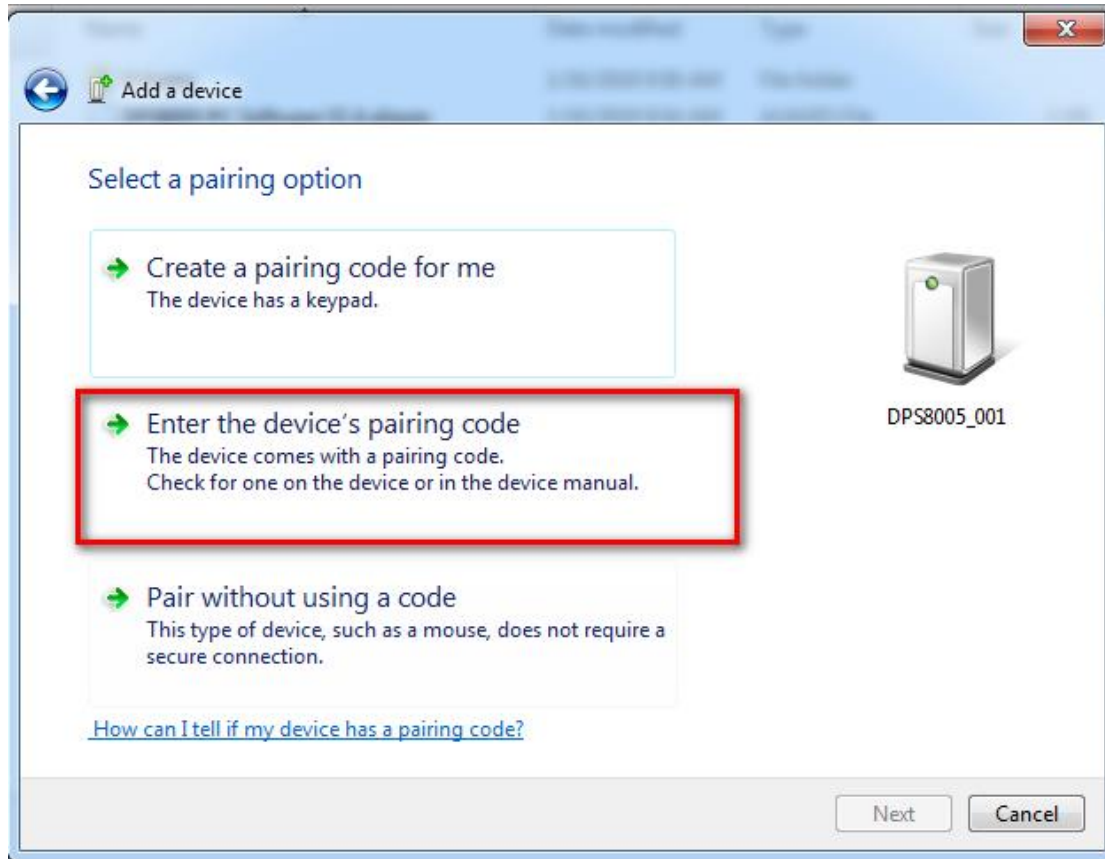
Bluetooth communication board is Bluetooth 3.0 protocol. Please use the attached cable to connect digital power supply with bluetooth communication board. After power on, the LED on the board will blink; so the bluetooth is in the state of searching. Now open the PC bluetooth and right click bluetooth icon to add device. Laptop can use its own blue teeth, and desktop can use the attached USB bluetooth adapter. When you insert the adapter into desktop, the driver will be installed automatically, and there will be bluetooth icon on desk state bar.



After searching, the bluetooth device will show and the last 3 bits 001 of name represent address code of digital power supply.

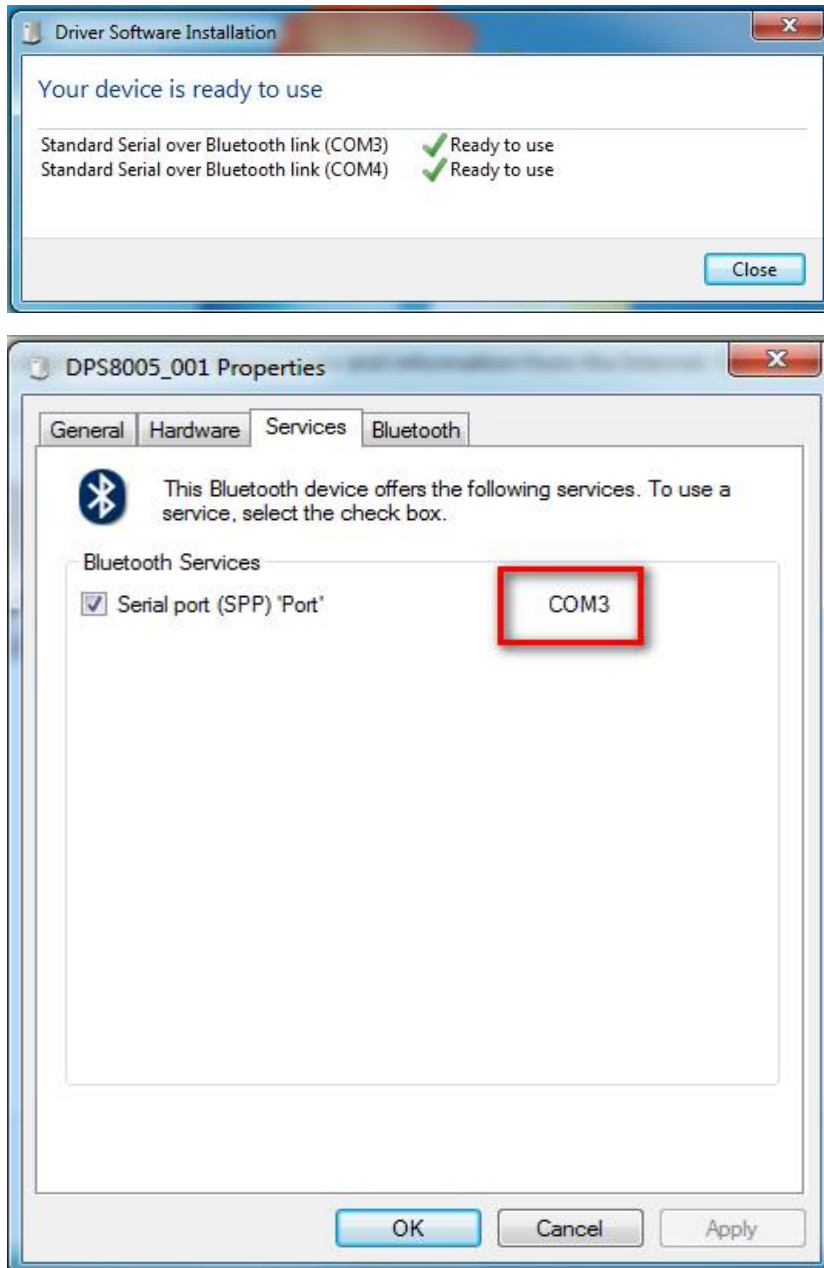


When connect bluetooth device, please enter pairing code, the default password is 1234.



## Hangzhou Ruideng Technology Co., Ltd.

After connecting, the system will download and install Virtual serial port driver of bluetooth automatically. The smaller number COM is what we use, eg COM3, we need to choose COM3 on upper computer.



If we need to adjust communication data, the operation is similar as wire communication.

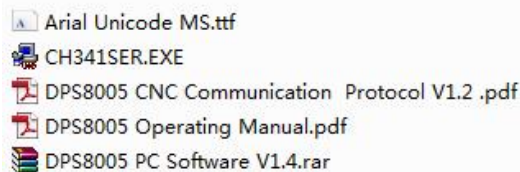
### Note:

- 1, The power supply voltage of communication interface is DC 3.3V and power supply ability is limit. Don't connect other big power bluetooth or WIFI module, otherwise it will be burnt.
- 2, when using the bluetooth communication function, if power off for digital power supply, you need to choose COM interface to connect bluetooth module again after power on.

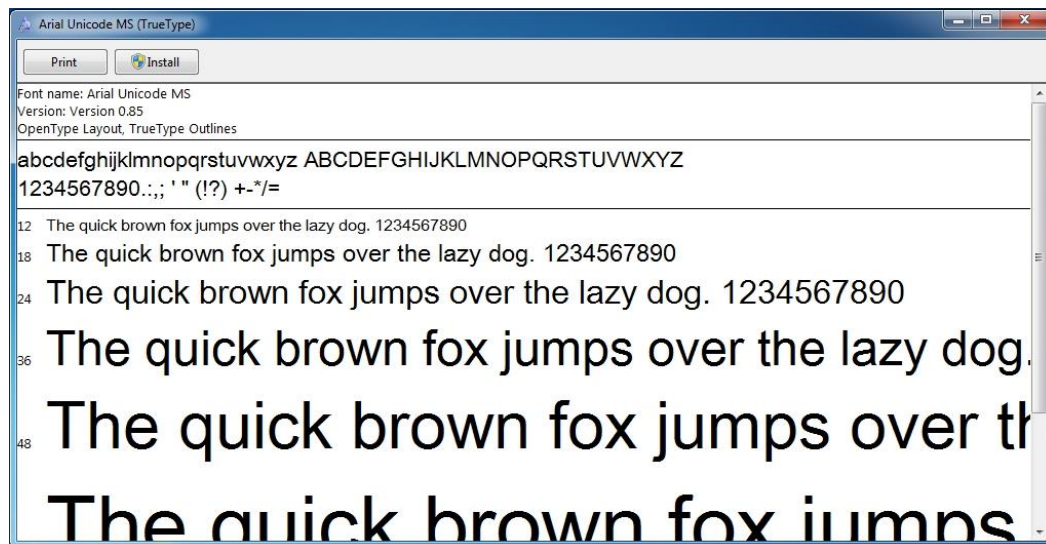
## Hangzhou Ruideng Technology Co., Ltd.

- 3, If the LED on bluetooth module is blinking, it shows it is on the state of disconnection. If LED is lighting, it shows it is on the state of connection
- 4, When using bluetooth function, don't put bluetooth module in the metal box, otherwise it will affect signal strength.
- 5, When changing communication data of digital power supply, you must disconnect bluetooth with PC, the LED will be blinking. Otherwise you can change the data of bluetooth board.
- 6, For computer operating system, please install official version. if you install pirated or lite operating system, there may be a lack of bluetooth virtual serial port driver on those operating system, and the system can't assign COM port to bluetooth board. And it can't communicate with the upper computer.

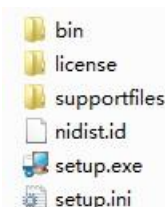
### 2.Instal the upper computer software



Double click the Arial Unicode MS Font Pack and click Install to install the Font Pack.



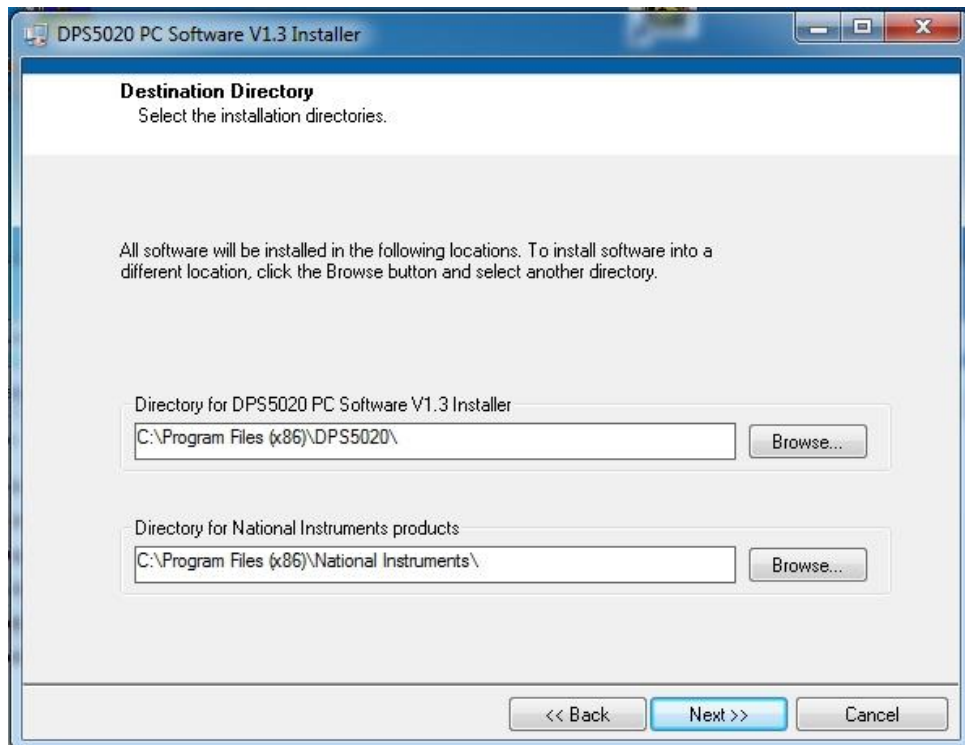
Open data package, unzip DPS8005 PC Software V1.3.  
Double click setup.exe and install DPS8005 PC Software.



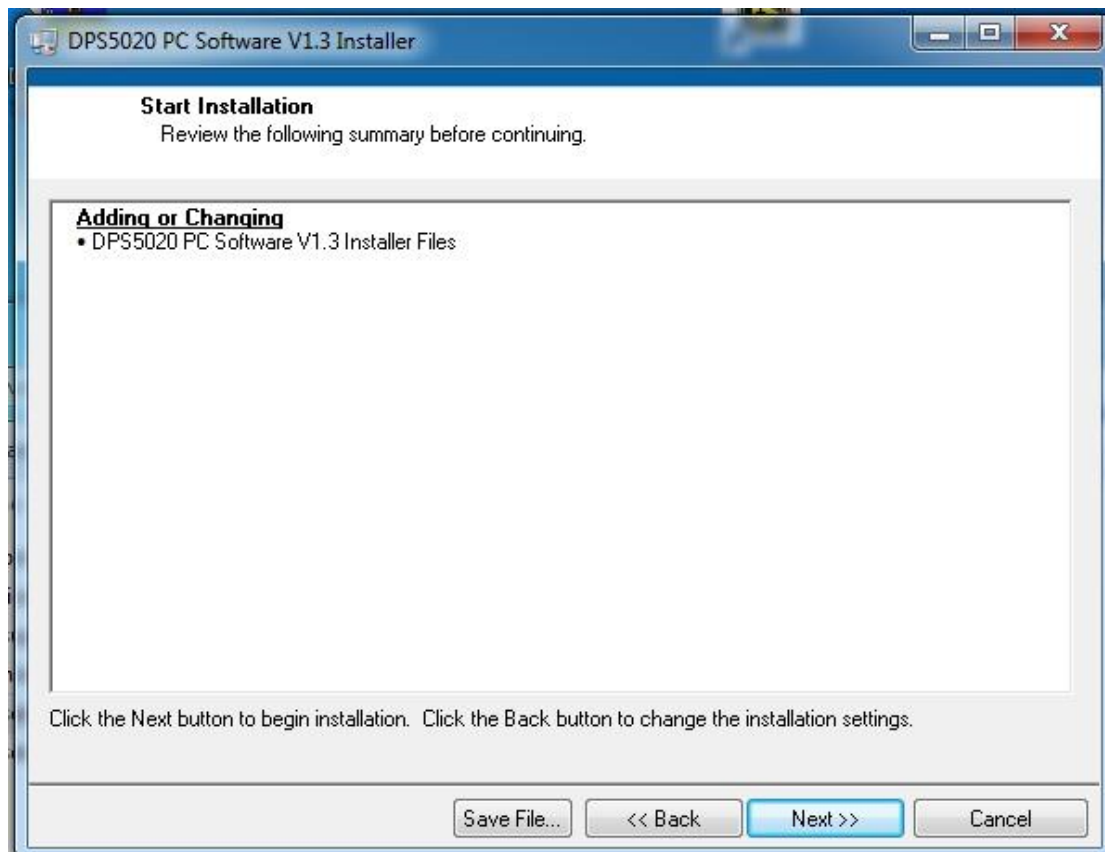


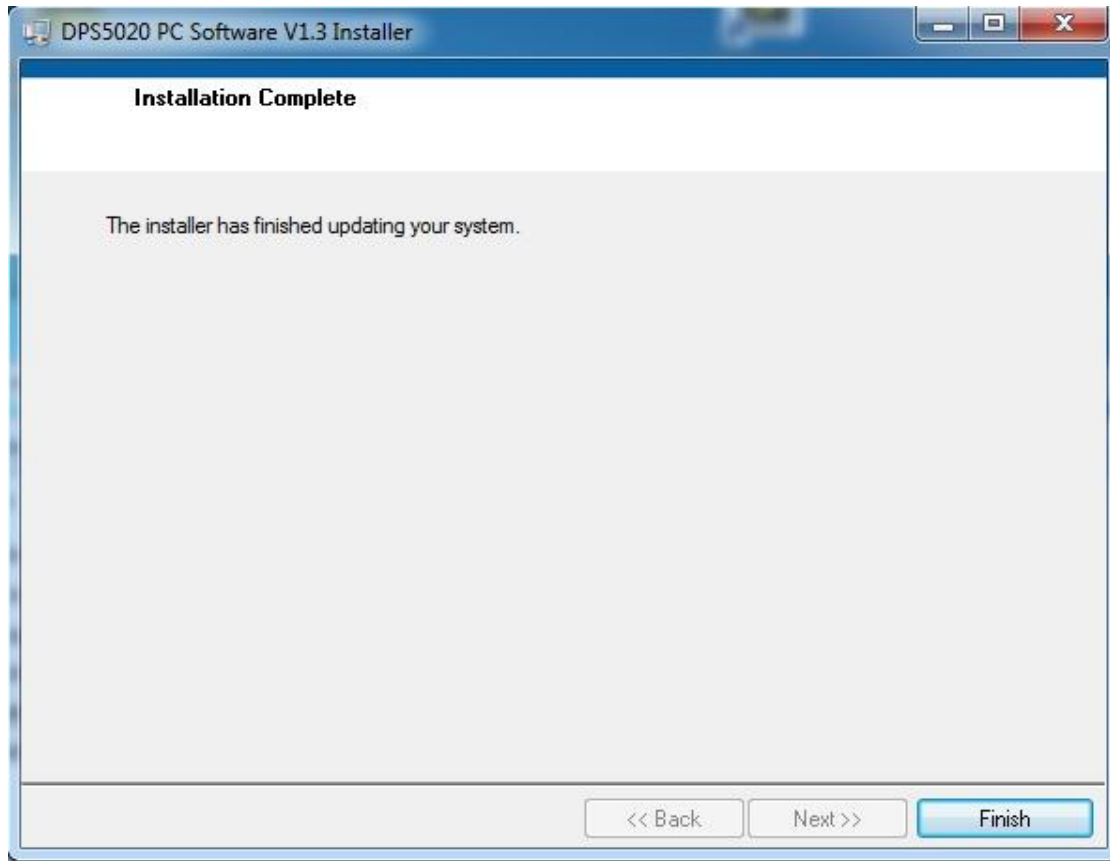
## Hangzhou Ruideng Technology Co., Ltd.

Select installation directory, and click next.



Click next to install, and wait installation to complete.

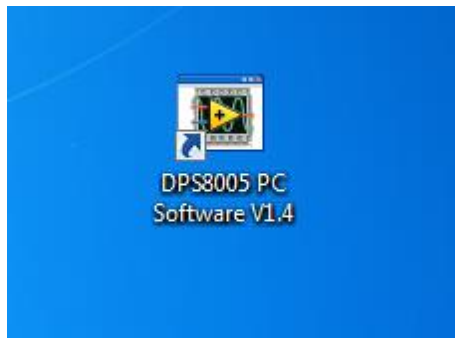




### 3 Software operating

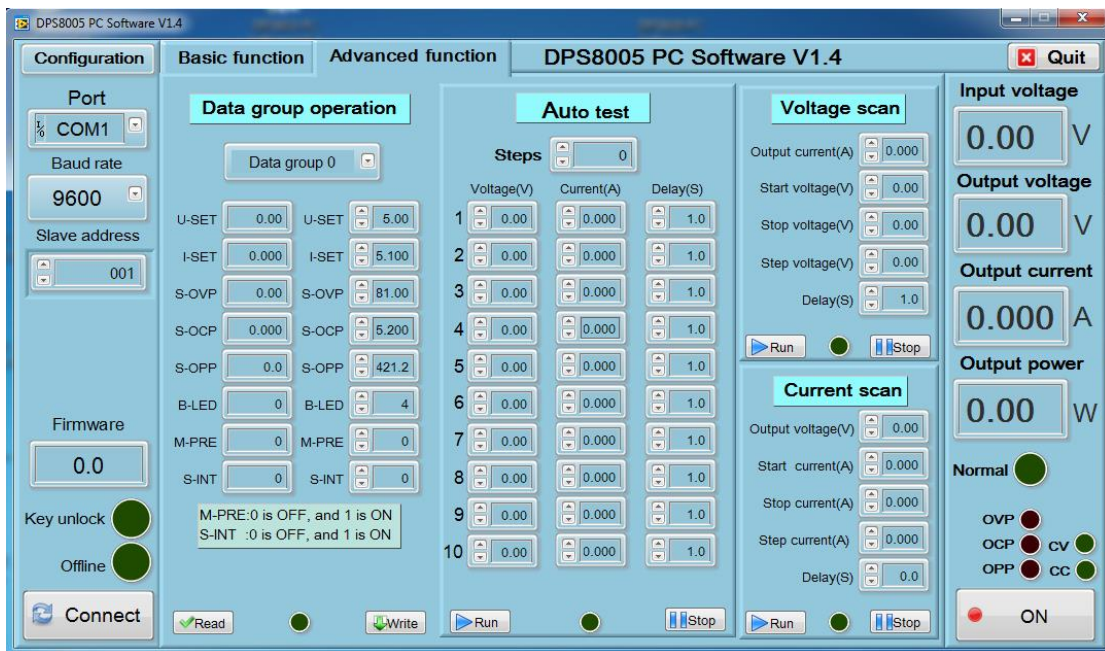
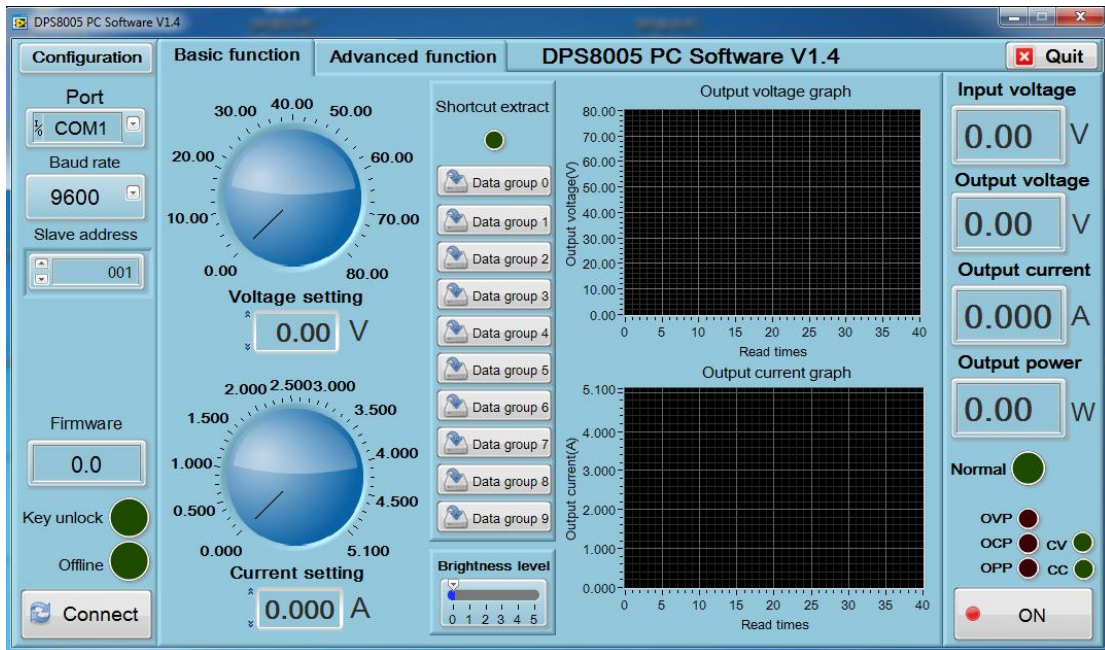
#### 3.1 Basic function introduction :

Double click short-cut icon on the desk to open upper computer software.



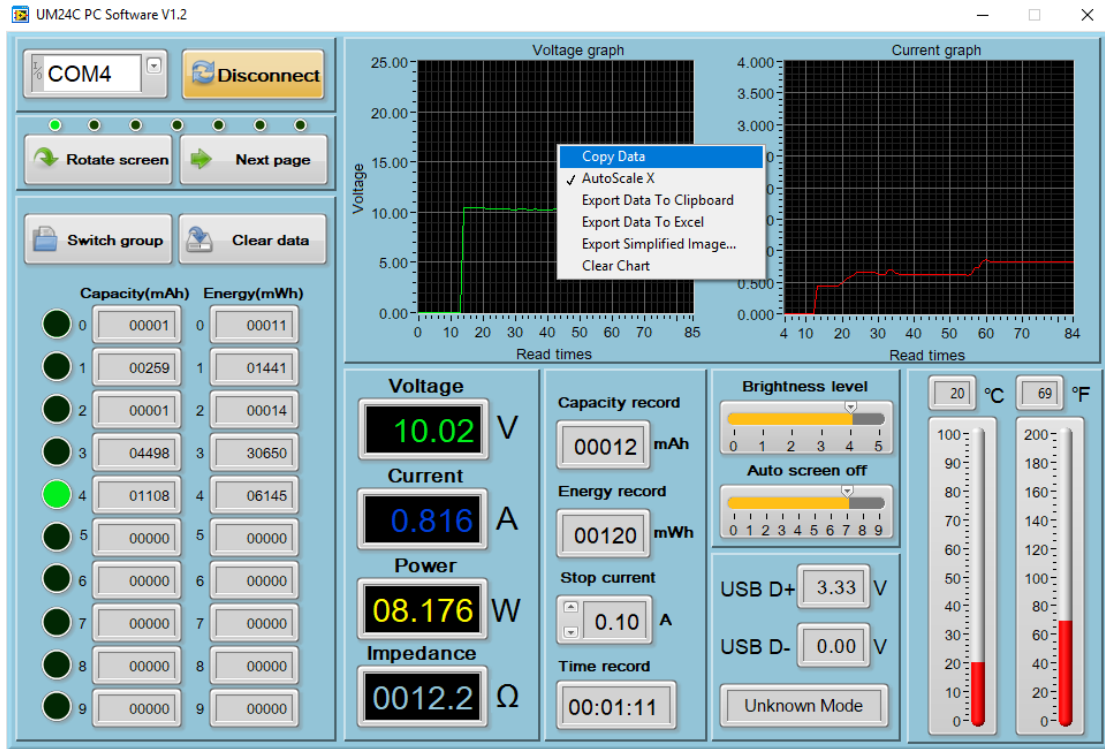
After opening software, select serial port(In Bluetooth communication, select the serial port, when the red LED from flashing to long bright, indicating that Bluetooth connectivity is successful), baud rate and slave address, and click online to communicate. After online, all the button of digital power supply are locked automatically; click "open" to open output of digital power supply. Basic function contains voltage and current setting, quick call out and brightness adjustment function. Advanced function contains data group reads and writes, automatic test, voltage scan and current scan function.



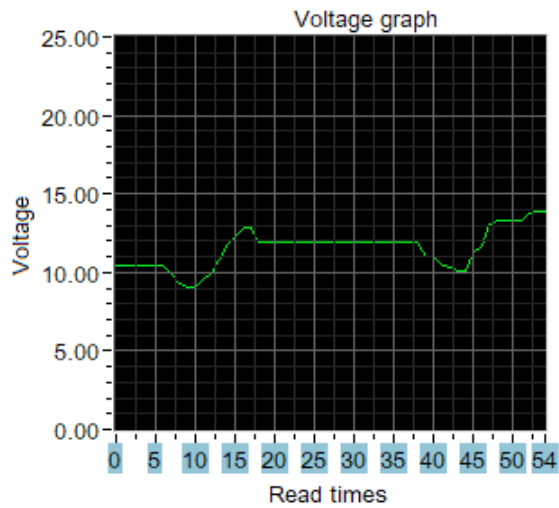


### 3.2 Graphing and Data Export:

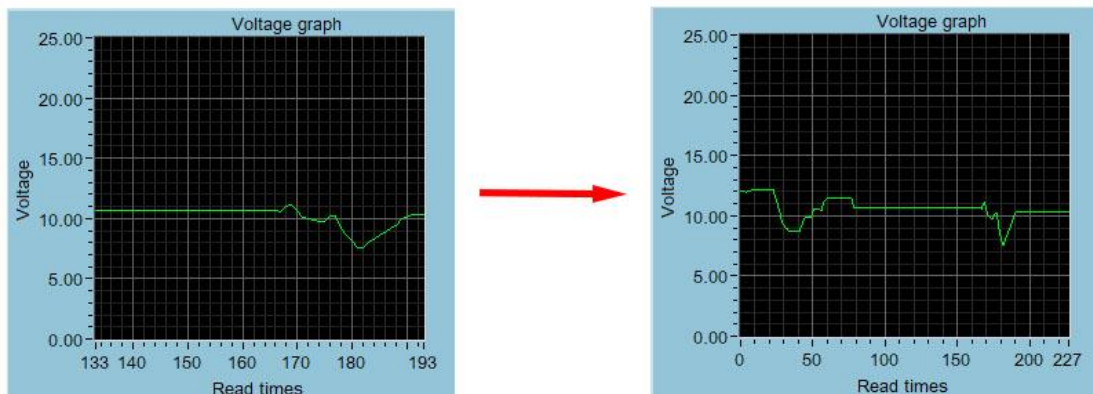
Move mouse over the Voltage / Time measurement graph then right-click and select the following options:



#### 4.2.1: Copy data to the clipboard:



#### 4.2.2: Automatically adjust the X axis:



#### 4.2.3: Export data to the clipboard:

# Hangzhou Ruideng Technology Co., Ltd.

Format : Reference point number on X Axis, Voltage value at that reference point.

Read times - 电压曲线 Voltage - 电压曲线

- 0 12.03
- 1 12.02
- 2 12.03
- 3 12.03
- 4 11.97
- 5 12.00
- 6 12.00
- 7 12.08
- 8 12.10
- 9 12.13

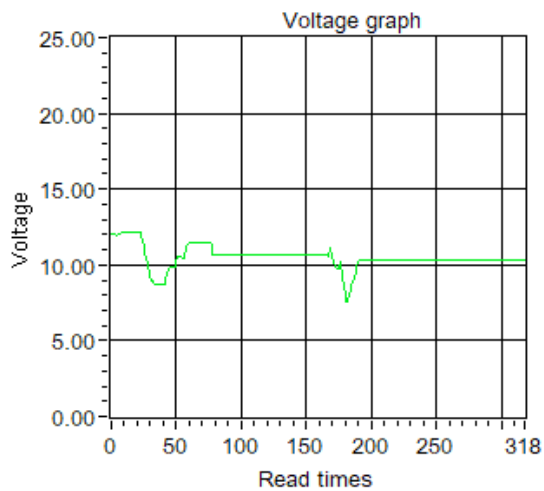
...

### 4.2.4: Export data to Excel:

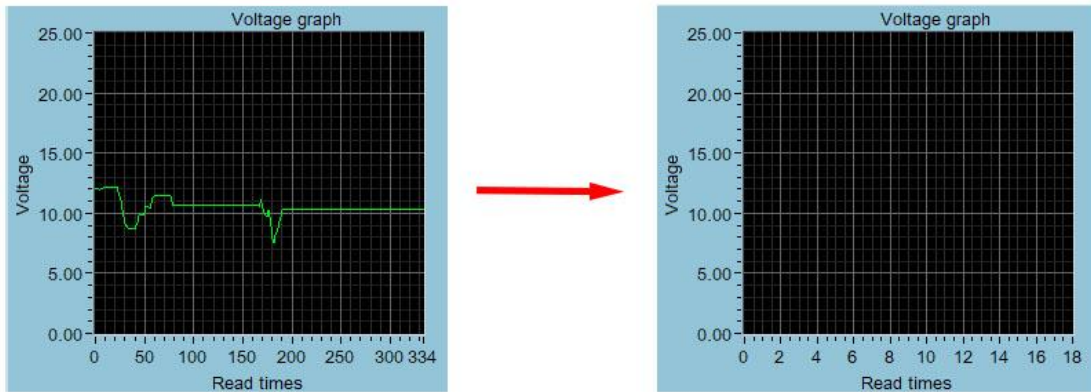
The X scale is adjustable to your preference. You can export up to 120 data reference points, or, only export the current recording data set. Please note, the exported data is only for Microsoft Office Excel.

|    | A                 | B              | C | D | E | F | G | H | I | J |
|----|-------------------|----------------|---|---|---|---|---|---|---|---|
| 1  | Read times - 电压曲线 | Voltage - 电压曲线 |   |   |   |   |   |   |   |   |
| 2  | 0                 | 12.03          |   |   |   |   |   |   |   |   |
| 3  | 1                 | 12.02          |   |   |   |   |   |   |   |   |
| 4  | 2                 | 12.03          |   |   |   |   |   |   |   |   |
| 5  | 3                 | 12.03          |   |   |   |   |   |   |   |   |
| 6  | 4                 | 11.97          |   |   |   |   |   |   |   |   |
| 7  | 5                 | 12             |   |   |   |   |   |   |   |   |
| 8  | 6                 | 12             |   |   |   |   |   |   |   |   |
| 9  | 7                 | 12.08          |   |   |   |   |   |   |   |   |
| 10 | 8                 | 12.1           |   |   |   |   |   |   |   |   |
| 11 | 9                 | 12.13          |   |   |   |   |   |   |   |   |
| 12 | 10                | 12.15          |   |   |   |   |   |   |   |   |
| 13 | 11                | 12.15          |   |   |   |   |   |   |   |   |
| 14 | 12                | 12.16          |   |   |   |   |   |   |   |   |
| 15 | 13                | 12.17          |   |   |   |   |   |   |   |   |
| 16 | 14                | 12.17          |   |   |   |   |   |   |   |   |
| 17 | 15                | 12.18          |   |   |   |   |   |   |   |   |
| 18 | 16                | 12.18          |   |   |   |   |   |   |   |   |
| 19 | 17                | 12.18          |   |   |   |   |   |   |   |   |
| 20 | 18                | 12.19          |   |   |   |   |   |   |   |   |

### 4.2.5: Export simplified images:



4.2.6: Clear chart:



Note:

1. for desktop, when you use the bluetooth adapter to make bluetooth connection, Please don't use the adapter own driver, and use the windows system bluetooth driver, otherwise the module can't make SSP series port communication. If you have installed the adaptor driver, you can uninstall it and unplug the adaptor, then plug in again, the system will install it automatically.
2. after power off, when power on again, you need to select the COM port again. When the bluetooth indicator is lighting, you can connect the PC with module
- 3, please use windows official version, simple version may lose some part.
- 4, when communicating, don't press the button on tester, otherwise there will be some error data